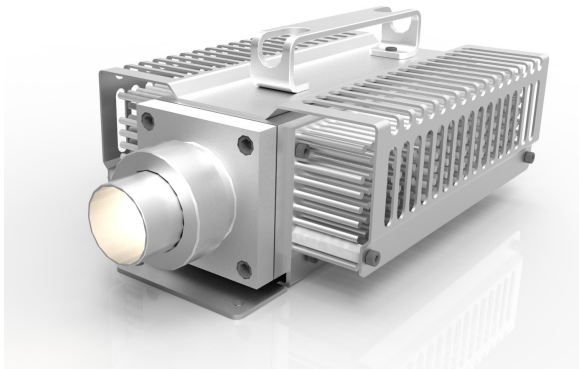


LED Lightsource LED-C24W IP67



FEATURES

GP LED-C24W IP67 is an advanced generator for fiber optics. Using newest technology we provide the best solution for lighting control. Industrial connectors provide quick installation of the entire lighting system.

Technical Information

-LED Light source	22 W Led Array / 7 LEDs
-Color temperature 1	3000K (others available)
-Color temperature & Lumen	1820lm@3000k
-Power supply	Constant Current / 1050mA
-Cooling	Passive Cooling, no Fan
-Connector	30mm, for Glass or PMMA Fiber
-Operating Temperature	-10 +45°C
-Protection	IP67
-Housing	Metal
-Finishing	Natural
-Dimensions	230,5mm x 135mm x 90,75mm
-Weight	2,5kg
-Standards	CE